

CERTIFIED LAND CORNER RECORDATION

DESCRIPTION OF CORNER EVIDENCE FOUND, AND ORIGINAL RECORD (if known)

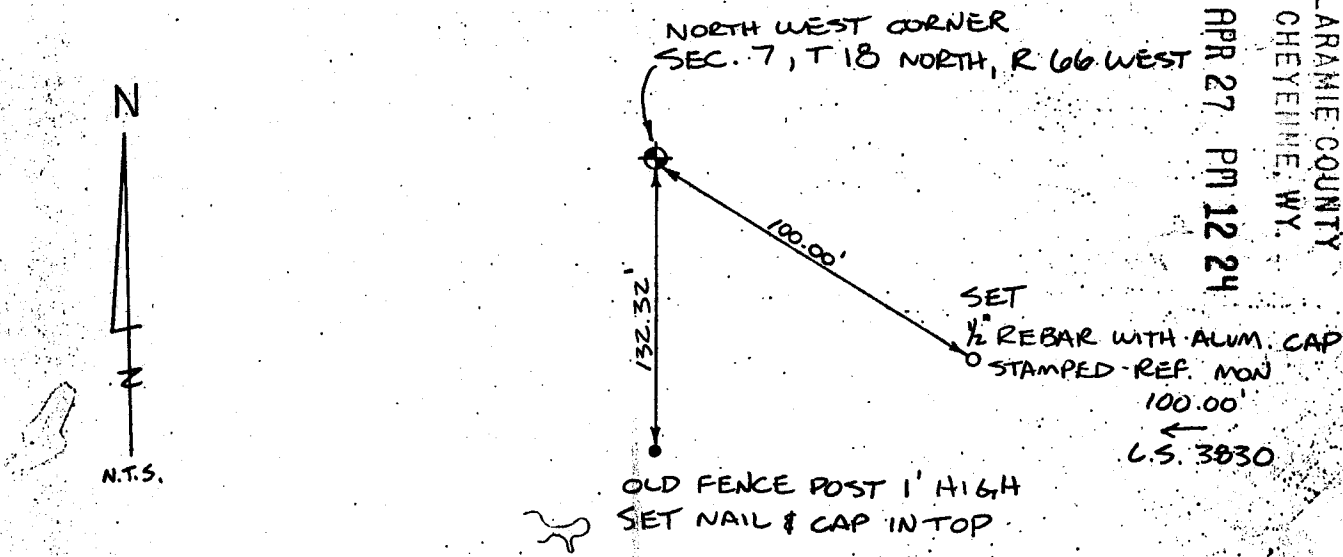
FOUND STONE 20" x 14" x 3" BROKEN IN 3 PIECES WITH 5 CHISEL MARKS ON SIDE

ORIGINAL RECORD CALLS FOR AN 18" x 13" x 3" SAND STONE

DESCRIPTION OF MONUMENT AND ACCESSORIES ESTABLISHED TO PERPETUATE THE ORIGINAL LOCATION OF THIS CORNER:

SET 1/2" REBAR WITH CAP U.S. 3830 IN CENTER OF BROKEN PIECES OF STONE. SET REBAR WITH ALUM. CAP STAMPED REF. MON. 100.00' U.S. 3830, AND NAIL AND CAP IN TOP OF OLD FENCE POST AS REFERENCE MONUMENTS.

SKETCH, WITH COURSE AND DISTANCE TO ADJACENT CORNER IF DETERMINED IN THIS SURVEY. (May Sketch or Paste Reproduction on Reverse Side.)



RECEIVED
043115
LARAMIE COUNTY
CHEYENNE, WY.
APR 27 PM 12 24

I, WALLACE G. MUSCOTT certify that I have carefully performed or reviewed the work done on the diagrammed corner as reported on this recordation form and approve the same.

Wallace G. Muscott 3830
Signature of Surveyor Registration No.



STATE OF WYOMING,
Office of Clerk and Recorder,
County of _____

This "corner record" was filed for record on the _____ day of _____, 19____, was noted on the cross-index plat and is assigned page No. _____, in book No. _____

James C. Whitehead
County Official

Cross Index No.	<u>E-1</u>	T.	<u>18N</u>	R.	<u>66W</u>	Mer.	<u>6th</u>
		T.		R.		Mer.	
		T.		R.		Mer.	
		T.		R.		Mer.	
		T.		R.		Mer.	
		T.		R.		Mer.	
		T.		R.		Mer.	